



## Habitat 4 Shelter

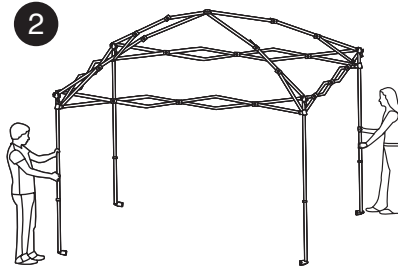
Model No. KC076-101

### PITCHING INSTRUCTIONS

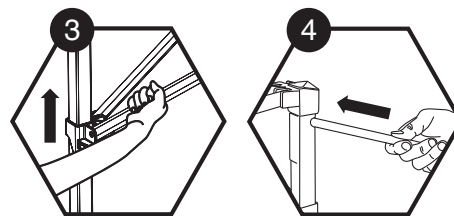
#### Your shelter includes:

- 8 x steel pegs
- 4 x ropes
- 1 x canopy
- 1 x steel frame
- 4 x silver corner poles

1. Select a dry, level site and clear the ground of any sharp objects. Remove the shelter from its carry bag and stand upright with the feet on the ground.

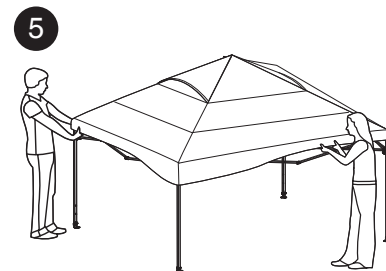


2. With two people at adjacent corners extend the frame outwards until the roof is open.



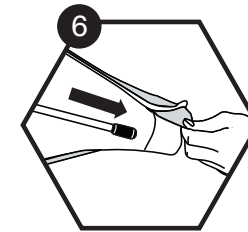
3. Slide the locking bracket up towards the roof and ensure the red button locks into place.

4. Extend each leg until the shelter is half way up. Insert the silver corner poles outward at the top of each pole.

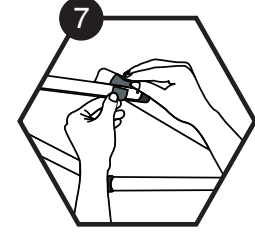


5. Unfold the canopy and pull over the frame.

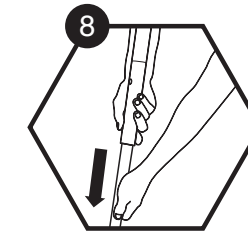
6. Insert the silver corner poles into the pocket on the corner of the canopy. The fabric will fit snugly.



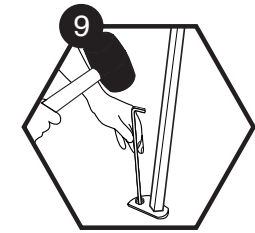
7. Secure the canopy to the frame using the hook and loop tabs.



8. Adjust the height of the shelter using the pin on the leg.



9. Peg out the four legs ensuring the shelter is square.



10. Peg out the guy ropes at a 45 degree angle.



**REVERSE THE PROCEDURE TO LOWER THE SHELTER**

## SHELTER CARE INSTRUCTIONS

PLEASE READ ALL SHELTER CARE INFORMATION & INSTRUCTIONS INCLUDED WITH THIS SHELTER BEFORE USING IT FOR THE FIRST TIME.

1. Before you use your new shelter, fully unpack and pitch it at home. It is important to familiarise yourself with the set up procedure and the various features.
2. Select a site that is level, clear of any sharp objects, is dry, will drain well if it rains and is protected from wind and other elements.
3. Keep clear of overhead power lines and trees when setting up your shelter.
4. For best and easiest results, enlist the help of at least one other person to assist in pitching the shelter.
5. Keep all flame and heat sources away from this shelter fabric. Do not use open flame or gas appliances in or near your shelter.
6. Do not use aerosol sprays or any solvent based products in or around your shelter as these could damage the fabric or special coatings. These products include but are not limited to: repellent spray, hair sprays, alcohol, detergents, fly spray, petrol, kerosene etc.
7. Please note, the warranty on this shelter will be deemed void if the product is used for any purpose other than a **temporary, recreational** use shelter.
8. Handle the shelter carefully when unfolding and folding the shelter frame.
9. Especially in windy conditions, it is essential that you attach guy ropes and fasten them to the ground. We suggest you insert the pegs into the ground at a 45° angle towards the shelter, not straight down. Please note, your shelter will not be covered under warranty if wind damage occurs.
10. Use all of the guy ropes and pegs included to ensure your shelter is secure and to prevent damage to both yourself and the shelter. Check guy ropes/ pegs daily.
11. To clean your shelter, only ever use a soft sponge and warm water. DO NOT use excess force or other harsh cleaners to remove marks from shelter.
12. Ensure the shelter is completely dry and clean before storing away and ensure to store it in a dry environment.

## IMPORTANT:

1. Under certain conditions (cold weather, high humidity etc.) condensation may form on the inside of your shelter. This does NOT mean your shelter is leaking through the fabric.
2. Try to avoid pitching your shelter under trees as tree limbs, falling leaves, sap, bird droppings or excess water dripping from the trees can cause damage to the shelter fabric and its special coatings resulting in leakage or discolouration.
3. Only remove the shelter pegs by pulling on the peg itself. NEVER pull on the shelter to remove pegs as it could result in damage to the shelter or personal injury.
4. DO NOT leave shelter pitched for weeks at a time as extended exposure to the sun's ultraviolet rays can damage and/or cause it to discolour. Your shelter will not be covered under warranty if you leave it up for many weeks at a time.
5. STORAGE:  
NEVER store your shelter wet or dirty (even for short periods of time).
6. You may want to insure your shelter against loss or damage.

## WARRANTY INFORMATION

The warranty period for this shelter is found on the packaging and full details are on the Kiwi Camping website - [www.kiwicamping.co.nz](http://www.kiwicamping.co.nz).

## KEY POINTS:

The original purchaser of this product is offered a warranty if during this time period the product fails due to a fault in either materials or workmanship. Service under this warranty is available by returning the product, with your proof of purchase, to where it was purchased. If after inspection it is determined that the product is defective, we will repair or replace it (at our discretion) free of charge. This warranty does not cover misuse, damage caused by accident, storm or wind damage, mildew, neglect, UV degradation and fair wear and tear. Please note, the warranty on this shelter will be deemed void if the product is used for any purpose other than a temporary shelter. If the claim is not deemed a warranty or is outside it's warranty period, we can repair the product at a nominal cost.



Distributed by:  
Aber Living, Hamilton, NZ  
[www.kiwicamping.co.nz](http://www.kiwicamping.co.nz)

5301 06/21